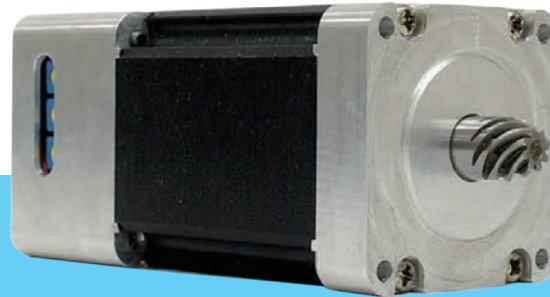


# MR-0905



## Specifications

Rated Power (W)	50W
Max. Speed (rpm)	3000RPM
Rated Torque (kg-cm)	1.5 kg-cm
Max. Torque (kg-cm)	3 kg-cm
Rated Current (A)	2A
Max. Current (A)	3A
Motor Voltage (V)	24VDC
IP Rank	IP54

## Size

unit:mm

